

the solution



Aquasill IP 65 Rx7s

Aquasill IP65 has been specifically designed for the illumination of building façades.

Very low profile helps lighting designers in integrating Aquasill IP65 in the project of buildings.

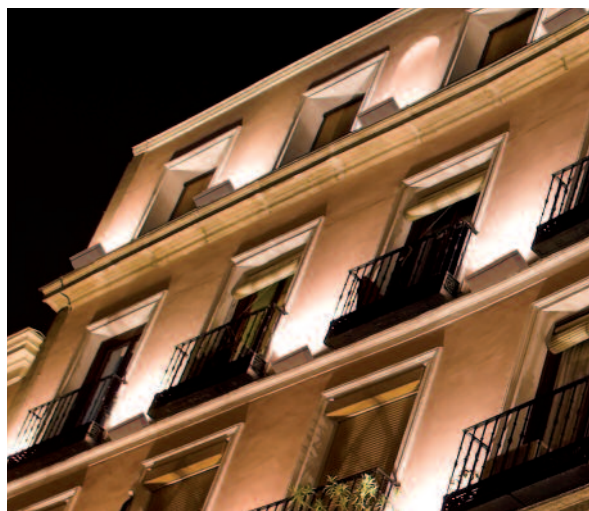
There are two possibilities for Aquasill to be used: or on wall by using brackets either directly on windows ledges.

Colours:

■ TEXTUR (silver grey)

□ MATT WHITE (on request)

■ MATT BLACK (on request)



Aquasill Rx7s

70 W
flood



- HIT-DE 70W (6.600 lm) or HST-DE 70W (6.800 lm sodium)
- WEIGHT 4,2 kg
- DIE-CAST ALUMINIUM. HOUSING AND BRACKETS.
- POLYESTER POWDER COATED.
- SUPER PURE ALUMINIUM REFLECTOR.
- STAINLESS STEEL SCREWS.
- SILICONE GASKETS.
- TEMPERED SAFETY GLASS.



415 mm

168 mm



92 mm

Aquasill Rx7s

150 W
flood



- HIT-DE 150W (14.800 lm) or HST-DE 150W (15.000 lm sodium)
- WEIGHT 4,9 kg
- DIE-CAST ALUMINIUM. HOUSING AND BRACKETS.
- POLYESTER POWDER COATED.
- SUPER PURE ALUMINIUM REFLECTOR.
- STAINLESS STEEL SCREWS.
- SILICONE GASKETS.
- TEMPERED SAFETY GLASS.



415 mm

168 mm



92 mm



Aquasill Darklight attachment (always included)



Double cable gland



Precise light aiming



Water drainage