



Aqualinea 14 - B

IP 67

Die cast aluminium body.
The IP 67 protection rating allows for dust-proofing and water-proofing, even during brief immersions.
Suitable for fitting in damp surroundings, both indoors and outdoors".

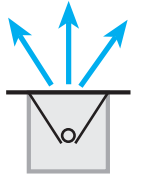


Aqualinea 14-B

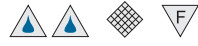


- 14 WATT T5 / G5
- IP 67
- FLUORESCENT
- CLEAR GLASS (STANDARD)
- FROSTED GLASS (ON REQUEST)
- DIE-CAST ALUMINIUM
- EXTRUDED ALUMINIUM
- SILICON GASKETS
- UNIT WEIGHT KG 3,4

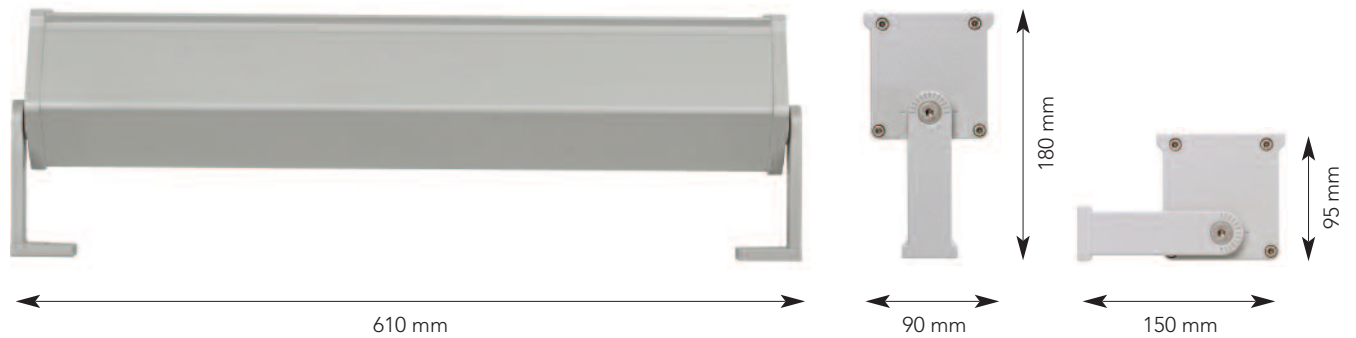
Glass surface temperature 35°C max Measured according to EN 60598 at ambient of 15°C electronic ballast 230/240 volt ready to install short circuit and overload protection die cast aluminium body, polyester painting anti corrosion prefinishing (phosphocromating)



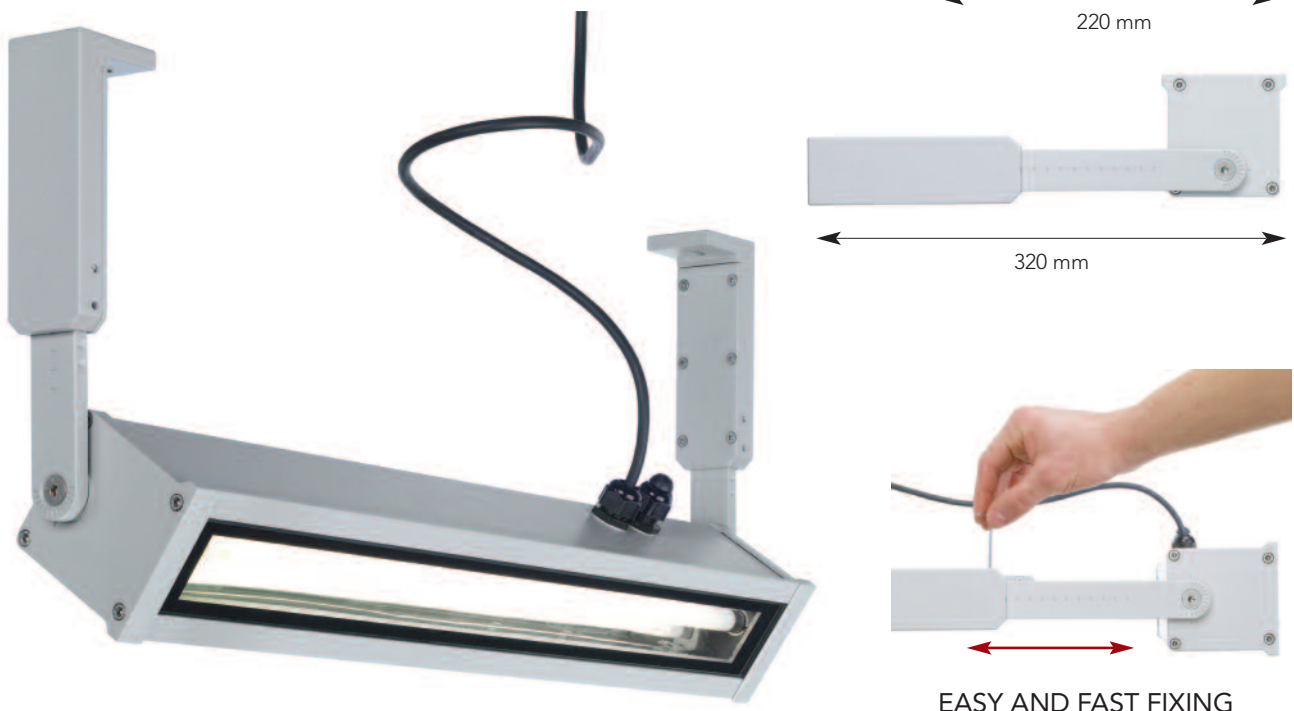
Symmetric reflector



STANDARD BRACKET (included)



AL-01: WALL EXTENSIBLE BRACKET (OPTION TO BE ORDERED SEPARATELY)





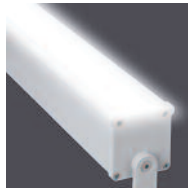
Aqualinea 21 - B

IP 67

Die cast aluminium body.
The IP 67 protection rating allows for
dust-proofing and water-proofing,
even during brief immersions.
Suitable for fitting in damp surroundings,
both indoors and outdoors".

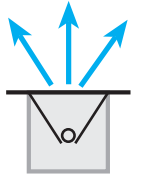


Aqualinea 21-B

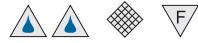


- 21 WATT T5 / G5
- IP 67
- FLUORESCENT
- CLEAR GLASS (STANDARD)
- FROSTED GLASS (ON REQUEST)
- DIE-CAST ALUMINIUM
- EXTRUDED ALUMINIUM
- SILICON GASKETS
- UNIT WEIGHT KG 4,4

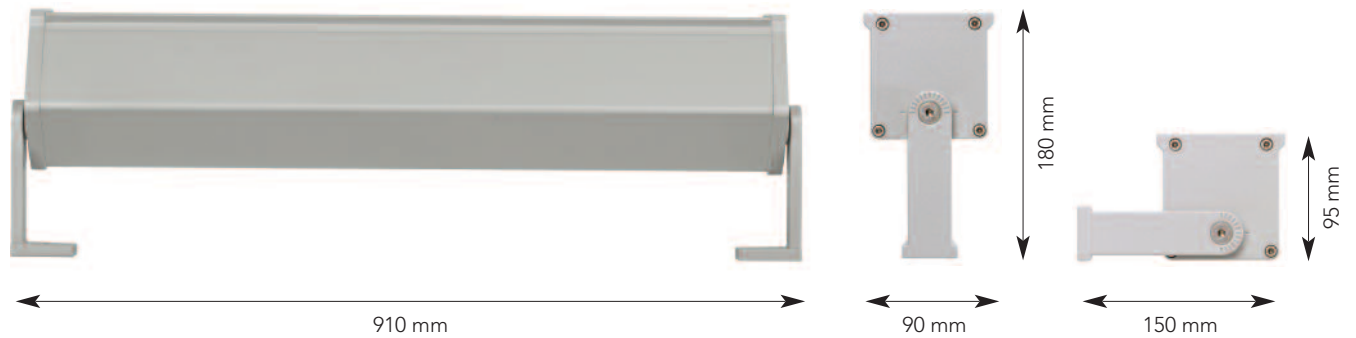
Glass surface temperature 35°C max Measured according to EN 60598 at ambient of 15°C electronic ballast 230/240 volt ready to install short circuit and overload protection die cast aluminium body, polyester painting anti corrosion prefinishing (phosphocromating)



Symmetric reflector



STANDARD BRACKET (included)



AL-01:
WALL EXTENSIBLE BRACKET (OPTION TO BE ORDERED SEPARATELY)



EASY AND FAST FIXING